



**Water Monitoring Result at M5B - Central Cooling Water Intake Group  
Mid-Flood Tide**

Date	Time	Weather Condition	Sampling Depth		Water Temperature			pH			Salinity		DO Saturation		DO		Turbidity		Suspended Solids					
					°C		-		ppt		%		mg/L		NTU		mg/L							
			m	Value	Average	Value	Average	Value	Average	Value	Average	Value	Average	Value	Average	Value	Average	Value	Average					
2/1/16	9:18	Fine	Middle	3.5	19.40	19.40	19.40	8.37	8.37	8.38	32.05	32.05	32.07	87.7	86.5	85.3	6.67	6.58	6.49	5.45	5.46	5.44	3	3.00
	9:20		Middle	3.5	19.40	19.40		8.38	8.38		32.08	32.08		84.0	82.9		6.38	6.31		5.46	5.40			
4/1/16	13:45	Fine	Middle	3.5	21.00	21.00	21.00	8.22	8.22	8.24	31.96	31.96	31.85	84.3	82.0	81.4	6.25	6.08	6.03	2.73	2.64	2.62	<2	<2
	13:47		Middle	3.5	21.00	21.00		8.26	8.26		31.73	31.73		80.6	78.5		5.98	5.82		2.56	2.54			
6/1/16	14:55	Fine	Middle	3.5	21.50	21.50	21.60	8.23	8.23	8.25	31.23	31.23	26.73	94.1	94.9	94.3	6.91	6.97	6.91	6.95	6.88	6.88	3	3.00
	14:57		Middle	3.5	21.70	21.70		8.26	8.26		31.23	13.23		94.6	93.6		6.94	6.80		6.86	6.83			
8/1/16	14:50	Fine	Middle	3.5	20.20	20.20	20.25	8.30	8.30	8.32	31.36	31.36	31.36	94.4	95.2	95.3	7.10	7.16	7.15	4.81	4.89	4.86	2	2.00
	14:52		Middle	3.5	20.30	20.30		8.34	8.34		31.36	31.37		96.2	95.2		7.16	7.16		4.88	4.87			
11/1/16	8:17	Rainy	Middle	3.5	19.00	19.00	19.00	8.42	8.42	8.43	31.41	31.41	31.42	84.5	85.2	84.4	6.50	6.56	6.50	7.20	7.19	7.15	3	3.00
	8:19		Middle	3.5	19.00	19.00		8.43	8.43		31.43	31.43		84.7	83.3		6.52	6.41		7.11	7.08			
13/1/16	9:18	Fine	Middle	3.5	18.40	18.40	18.45	8.36	8.36	8.38	30.70	30.70	30.84	88.0	86.3	87.0	6.85	6.72	6.77	4.93	5.08	4.95	5	4.50
	9:20		Middle	3.5	18.50	18.50		8.40	8.40		30.97	30.97		86.4	87.1		6.73	6.78		4.94	4.85			
15/1/16	10:39	Rainy	Middle	3.5	17.90	17.90	17.95	8.36	8.36	8.38	30.78	30.78	30.85	85.0	82.4	82.6	6.68	6.51	6.50	5.83	5.33	5.35	3	3.00
	10:41		Middle	3.5	18.00	18.00		8.39	8.39		30.92	30.92		82.0	80.8		6.46	6.35		5.13	5.09			
18/1/16	11:02	Fine	Middle	3.5	18.20	18.20	18.15	8.42	8.42	8.44	30.85	30.85	30.86	91.8	91.4	91.6	7.20	7.17	7.19	7.77	7.77	7.79	2	2.50
	11:04		Middle	3.5	18.10	18.10		8.45	8.45		30.86	30.86		92.6	90.6		7.26	7.11		7.78	7.83			
20/1/16	14:59	Cloudy	Middle	3.5	17.80	17.80	17.70	8.39	8.39	8.42	31.31	31.31	31.32	96.7	95.5	95.4	7.64	7.54	7.54	7.48	7.47	7.47	<2	3.00
	15:01		Middle	3.5	17.60	17.60		8.45	8.45		31.32	31.32		95.0	94.5		7.50	7.46		7.47	7.46			
22/1/16	15:39	Rainy	Middle	3.5	17.30	17.30	17.30	8.39	8.39	8.41	30.94	30.94	31.01	89.1	88.0	87.3	7.09	7.00	6.95	6.72	6.70	6.69	<2	2.00
	15:41		Middle	3.5	17.30	17.30		8.43	8.43		31.07	31.07		86.5	85.6		6.89	6.82		6.69	6.66			
25/1/16	8:07	Fine	Middle	3.5	14.00	14.00	14.00	8.40	8.40	8.42	31.31	31.31	31.34	87.5	86.3	85.7	7.42	7.32	7.27	9.08	9.09	9.07	4	4.00
	8:09		Middle	3.5	14.00	14.00		8.43	8.43		31.36	31.36		84.9	83.9		7.20	7.12		9.09	9.00			
27/1/16	8:50	Cloudy	Middle	4.0	15.20	15.20	15.15	8.39	8.39	8.41	31.25	31.25	31.25	96.4	96.4	96.3	8.00	8.00	7.99	9.49	9.50	9.50	4	5.00
	8:52		Middle	4.0	15.10	15.10		8.42	8.42		31.25	31.25		96.1	96.1		7.98	7.98		9.50	9.51			
29/1/16	10:10	Rainy	Middle	3.5	16.80	16.80	16.80	8.35	8.35	8.37	30.83	30.83	30.83	94.9	95.1	94.7	7.65	7.66	7.63	8.00	8.00	8.02	5	4.00
	10:12		Middle	3.5	16.80	16.80		8.39	8.39		30.82	30.82		94.9	93.9		7.65	7.56		7.97	8.11			

Single underline denotes exceedance over Action Level.  
Double underline denotes exceedance over Limit Level.



**Water Monitoring Result at Culvert J - Reference Station  
Mid-Flood Tide**

Date	Time	Weather Condition	Sampling Depth		Water Temperature			pH			Salinity			DO Saturation			DO		Turbidity			Suspended Solids		
					°C		-		ppt		%		mg/L		NTU		mg/L							
			m	Value	Average	Value	Average	Value	Average	Value	Average	Value	Average	Value	Average	Value	Average	Value	Average	Value	Average			
2/1/16	9:14	Fine	Middle	3.5	19.50	19.50	19.50	8.36	8.36	8.37	31.53	31.53	31.53	81.6	81.4	80.3	6.22	6.20	6.12	6.11	6.13	6.21	3	3.00
	9:16		Middle	3.5	19.50	19.50		8.37	8.37		31.53	31.53		80.2	77.9		6.11	5.93		6.29	6.29		3	
4/1/16	13:41	Fine	Middle	3.5	21.40	21.40	21.45	8.22	8.22	8.23	29.61	29.61	29.60	73.9	73.1	73.8	5.49	5.44	5.48	8.29	8.29	8.28	4	4.50
	13:43		Middle	3.5	21.50	21.50		8.23	8.23		29.58	29.58		73.8	74.2		5.48	5.52		8.26	8.26		5	
6/1/16	14:50	Fine	Middle	3.0	22.40	22.40	22.55	8.19	8.19	8.21	28.53	28.53	28.52	90.3	88.2	88.1	6.62	6.46	6.46	9.43	9.43	9.43	7	6.50
	14:52		Middle	3.0	22.70	22.70		8.23	8.23		28.51	28.51		88.2	85.8		6.46	6.28		9.44	9.41		6	
8/1/16	14:45	Fine	Middle	3.0	20.70	20.70	20.70	8.22	8.22	8.26	29.18	29.18	29.18	91.3	91.4	90.7	6.88	6.89	6.84	9.06	9.06	9.07	2	2.50
	14:47		Middle	3.0	20.70	20.70		8.29	8.29		29.17	29.17		90.4	89.7		6.80	6.78		9.07	9.08		3	
11/1/16	8:13	Rainy	Middle	3.5	18.90	18.90	18.90	8.36	8.36	8.38	30.85	30.85	30.86	88.0	88.3	87.9	6.81	6.83	6.80	8.29	8.29	8.30	3	3.50
	8:15		Middle	3.5	18.90	18.90		8.40	8.40		30.87	30.87		88.4	86.8		6.83	6.72		8.29	8.32		4	
13/1/16	9:14	Fine	Middle	3.5	18.50	18.50	18.45	8.36	8.36	8.37	28.73	28.73	28.75	76.5	75.0	74.5	6.04	5.92	5.88	9.66	9.66	9.66	6	6.00
	9:16		Middle	3.5	18.40	18.40		8.38	8.38		28.77	28.77		74.0	72.6		5.84	5.73		9.66	9.66		6	
15/1/16	10:35	Rainy	Middle	3.5	17.80	17.80	17.80	8.34	8.34	8.36	28.56	28.56	28.57	83.5	82.7	82.6	6.69	6.67	6.61	9.69	9.69	9.69	5	5.50
	10:37		Middle	3.5	17.80	17.80		8.37	8.37		28.57	28.57		82.9	81.4		6.56	6.52		9.69	9.68		6	
18/1/16	10:58	Fine	Middle	3.5	18.10	18.10	18.10	8.35	8.35	8.39	29.67	29.67	29.67	94.9	94.0	93.8	7.50	7.43	7.42	8.94	8.96	8.96	3	3.00
	11:00		Middle	3.5	18.10	18.10		8.42	8.42		29.67	29.67		93.5	92.9		7.39	7.35		8.97	8.97		3	
20/1/16	15:03	Cloudy	Middle	3.5	17.70	17.70	17.65	8.49	8.49	8.50	31.10	31.10	31.10	80.9	90.3	87.3	7.19	7.30	7.14	7.00	7.00	7.00	3	3.00
	15:05		Middle	3.5	17.60	17.60		8.50	8.50		31.10	31.10		89.1	88.9		7.05	7.03		7.00	6.99		3	
22/1/16	15:35	Rainy	Middle	3.5	17.40	17.40	17.40	8.39	8.39	8.41	27.28	27.28	27.29	83.2	82.2	81.7	6.77	6.69	6.65	10.59	10.51	10.51	6	6.00
	15:37		Middle	3.5	17.40	17.40		8.43	8.43		27.29	27.29		81.0	80.2		6.60	6.53		10.49	10.46		6	
25/1/16	8:00	Fine	Middle	3.5	13.30	13.30	13.15	8.30	8.30	8.34	30.95	30.94	31.01	88.4	86.9	87.0	7.65	7.52	7.53	10.17	10.18	10.17	5	5.00
	8:05		Middle	3.5	13.00	13.00		8.38	8.38		31.08	31.08		86.3	86.2		7.47	7.47		10.18	10.15		5	
27/1/16	8:45	Cloudy	Middle	3.5	15.10	15.10	15.00	8.31	8.31	8.34	29.94	29.94	29.95	93.6	93.7	93.1	7.86	7.86	7.82	9.78	9.77	9.78	7	6.00
	8:47		Middle	3.5	14.90	14.90		8.38	8.35		29.96	29.96		92.7	92.4		7.79	7.76		9.77	9.78		5	
29/1/16	10:05	Rainy	Middle	3.5	17.00	17.00	17.05	8.31	8.31	8.35	25.96	25.96	25.96	97.3	96.7	96.4	8.03	7.98	7.96	15.37	15.33	15.31	8	8.00
	10:07		Middle	3.5	17.10	17.10		8.39	8.39		25.95	25.96		96.3	95.3		7.95	7.89		15.30	15.23		8	



**Water Monitoring Result at M5B - Central Colling Water Intake Group  
Mid-Ebb Tide**

Date	Time	Weather Condition	Sampling Depth		Water Temperature			pH			Salinity		DO Saturation		DO		Turbidity		Suspended Solids					
					°C			-			ppt		%		mg/L		NTU		mg/L					
			m	Value	Average	Value	Average	Value	Average	Value	Average	Value	Average	Value	Average	Value	Average	Value	Average					
2/1/16	4:37	Fine	Middle	3.5	19.20	19.20	19.15	8.33	8.33	8.35	32.07	32.07	32.08	84.9	82.3	82.6	6.49	6.29	6.31	5.82	5.78	5.79	2	2.00
	4:39		Middle	3.5	19.10	19.10		8.37	8.37		32.09	32.09		81.5	81.6		6.23	6.24		5.78	5.77			
4/1/16	21:54	Cloudy	Middle	3.5	20.40	20.40	20.45	8.38	8.38	8.39	32.07	32.07	32.07	81.0	82.3	81.9	6.04	6.13	6.10	2.88	2.87	2.82	3	3.50
	21:55		Middle	3.5	20.50	20.50		8.40	8.40		32.06	32.06		82.0	82.2		6.11	6.13		2.84	2.68		4	
6/1/16	23:01	Fine	Middle	3.5	20.60	20.60	20.65	8.38	8.38	8.39	31.69	31.69	31.69	80.8	81.5	81.2	6.03	6.08	6.05	1.40	1.35	1.41	3	3.00
	23:02		Middle	3.5	20.70	20.70		8.40	8.40		31.69	31.70		81.4	81.0		6.07	6.03		1.42	1.48		3	
8/1/16	0:11	Cloudy	Middle	3.5	18.90	18.90	18.90	8.35	8.35	8.36	31.42	31.42	31.42	80.5	82.0	82.8	6.18	6.34	6.37	2.05	2.17	2.22	3	3.00
	0:12		Middle	3.5	18.90	18.90		8.37	8.37		31.42	31.42		85.3	83.2		6.56	6.41		2.37	2.30		3	
11/1/16	1:20	Cloudy	Middle	3.5	18.60	18.60	18.60	8.27	8.27	8.28	30.42	30.42	30.42	85.1	84.6	84.6	6.64	6.60	6.60	2.65	2.67	2.62	2	2.00
	1:21		Middle	3.5	18.60	18.60		8.29	8.29		30.42	30.42		85.0	83.7		6.63	6.53		2.63	2.52		<2	
13/1/16	14:43	Fine	Middle	3.5	19.70	19.70	19.70	8.41	8.41	8.43	31.12	31.12	31.23	91.5	90.6	90.7	6.95	6.88	6.89	5.62	5.57	5.57	<2	<2
	14:45		Middle	3.5	19.70	19.70		8.44	8.44		31.34	31.34		90.6	90.0		6.88	6.84		5.45	5.62		<2	
15/1/16	17:28	Rainy	Middle	3.5	17.80	17.80	17.80	8.42	8.42	8.43	30.39	30.39	30.40	88.3	86.0	85.1	6.79	6.79	6.69	7.27	7.24	7.24	3	3.50
	17:30		Middle	3.5	17.80	17.80		8.43	8.43		30.40	30.40		83.4	82.6		6.64	6.54		7.22	7.21		4	
18/1/16	19:55	Cloudy	Middle	3.5	17.70	17.70	17.60	8.51	8.51	8.52	31.15	31.15	31.15	83.0	83.1	83.3	6.57	6.60	6.61	1.41	1.43	1.41	<2	2.00
	19:56		Middle	3.5	17.50	17.50		8.52	8.52		31.15	31.15		83.5	83.7		6.63	6.65		1.40	1.40		2	
20/1/16	20:22	Cloudy	Middle	3.5	17.10	17.10	17.05	8.54	8.54	8.56	31.59	31.59	31.59	87.1	87.5	87.1	6.95	6.99	6.96	3.12	3.15	3.15	4	3.50
	20:23		Middle	3.5	17.00	17.00		8.57	8.57		31.59	31.59		87.2	86.6		6.97	6.91		3.14	3.19		3	
22/1/16	2:31	Cloudy	Middle	3.0	14.70	14.70	14.75	8.54	8.54	8.55	31.33	31.33	31.35	84.5	84.8	84.7	7.07	7.09	7.09	2.12	2.14	2.11	<2	<2
	2:32		Middle	3.0	14.80	14.80		8.56	8.56		31.40	31.34		85.0	84.6		7.10	7.08		2.10	2.06		<2	
25/1/16	0:38	Fine	Middle	3.0	10.40	10.40	10.20	8.26	8.26	8.30	30.69	30.69	30.69	83.6	83.6	83.4	7.73	7.74	7.72	2.75	2.72	2.80	4	3.50
	0:39		Middle	3.0	10.00	10.00		8.34	8.34		30.69	30.69		83.1	83.2		7.70	7.72		2.82	2.90		3	
27/1/16	1:37	Cloudy	Middle	3.0	14.40	14.40	14.25	8.26	8.26	8.31	31.05	31.05	31.07	83.0	83.2	83.3	7.02	7.03	7.04	2.76	2.74	2.73	4	4.00
	1:38		Middle	3.0	14.10	14.10		8.36	8.36		31.09	31.09		83.4	83.4		7.06	7.06		2.71	2.69		4	
29/1/16	4:55	Cloudy	Middle	3.0	16.50	16.50	16.50	8.47	8.47	8.49	29.91	29.91	29.91	84.8	85.1	84.9	6.92	6.94	6.93	3.68	3.66	3.69	2	2.50
	4:56		Middle	3.0	16.50	16.50		8.50	8.50		29.91	29.91		84.9	84.9		6.92	6.92		3.70	3.72		3	

Single underline denotes exceedance over Action Level.  
Double underline denotes exceedance over Limit Level.

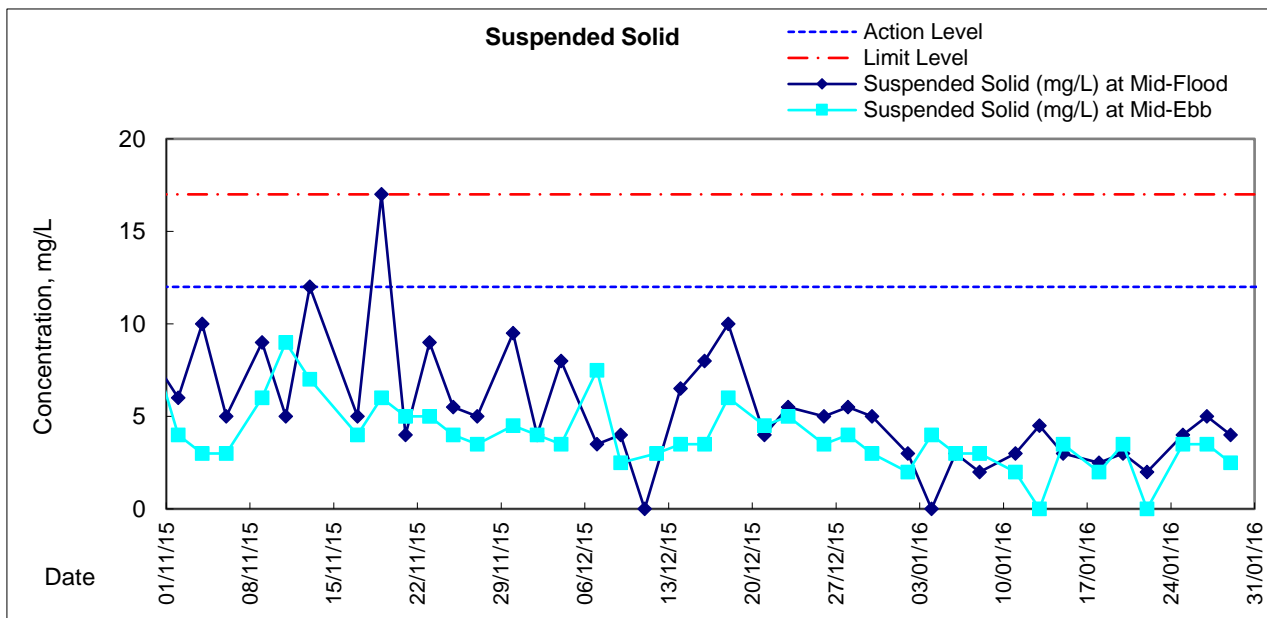
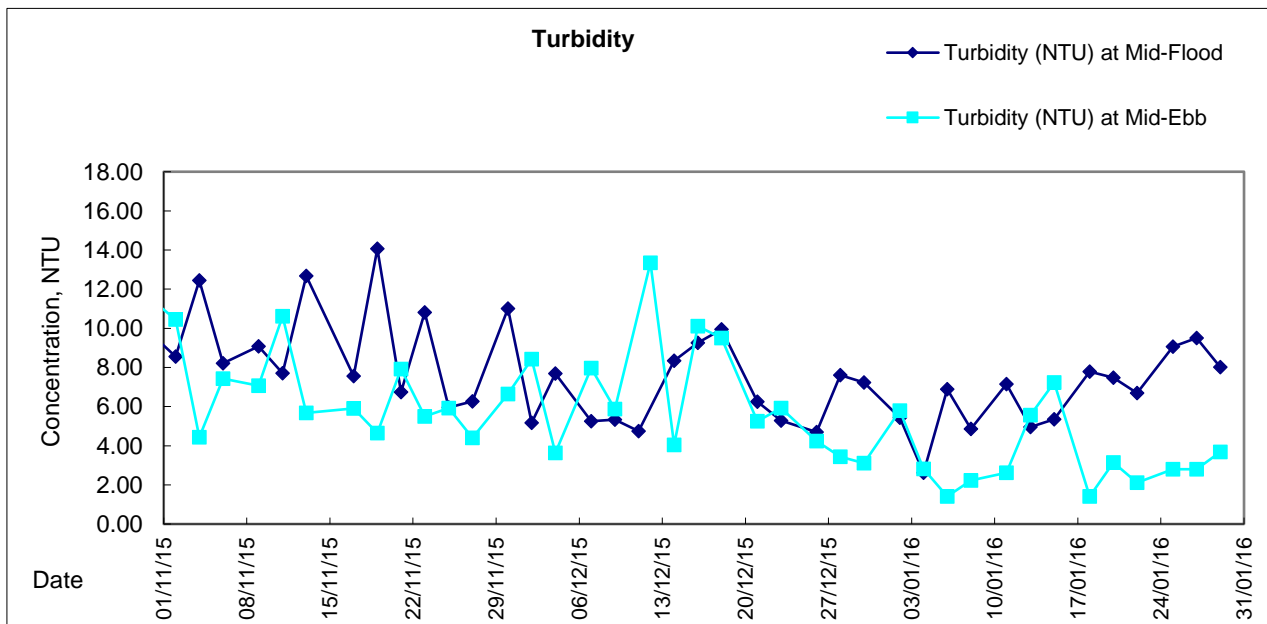
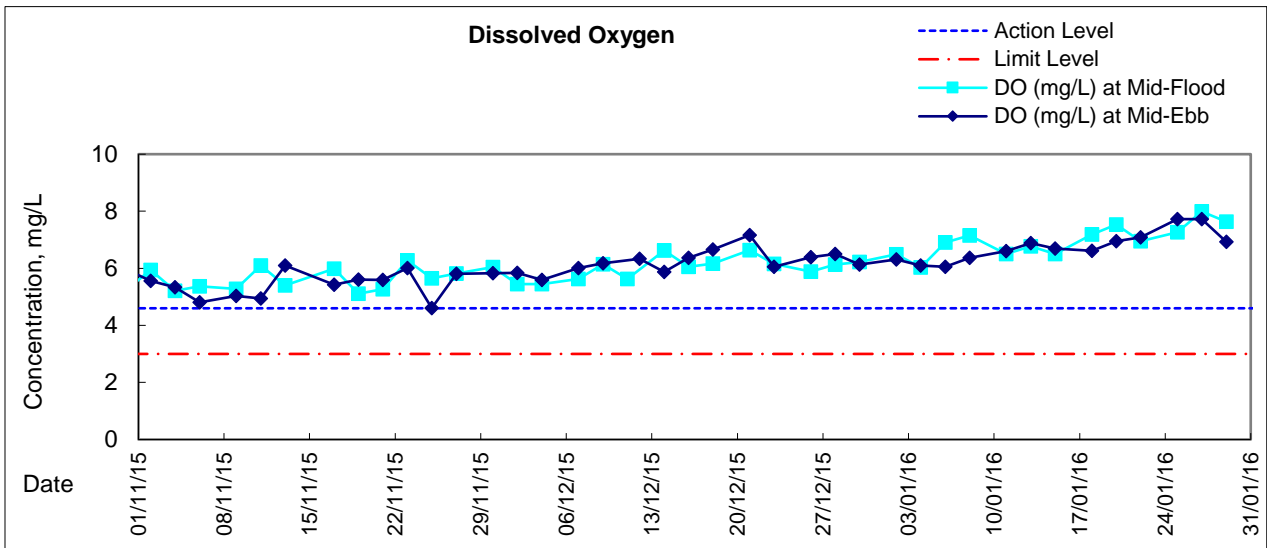


**Water Monitoring Result at Culvert J - Reference Station  
Mid-Ebb Tide**

Date	Time	Weather Condition	Sampling Depth		Water Temperature			pH			Salinity			DO Saturation			DO			Turbidity			Suspended Solids	
					°C		-		ppt		%		mg/L		NTU		mg/L							
					Value	Average	Value	Average	Value	Average	Value	Average	Value	Average	Value	Average	Value	Average	Value	Average	Value	Average		
2/1/16	4:31	Fine	Middle	4	19.10	19.10	19.10	8.30	8.30	8.31	30.97	30.97	30.98	79.3	79.5	78.8	6.11	6.13	6.07	7.22	7.23	7.23	<2	<2
	4:33		Middle	4	19.10	19.10		8.31	8.31		30.98	30.98		79.0	77.4		6.09	5.96		7.23	7.22		<2	
4/1/16	22:00	Cloudy	Middle	3	20.60	20.60	20.60	8.42	8.42	8.41	26.99	26.99	26.99	57.5	57.7	57.6	4.40	4.42	4.41	12.63	12.55	13.12	6	6.00
	22:01		Middle	3	20.60	20.60		8.38	8.40		26.99	26.99		57.6	57.4		4.41	4.39		13.38	13.92		6	
6/1/16	23:06	Fine	Middle	3	20.40	20.40	20.45	8.43	8.43	8.42	29.33	29.32	29.33	70.7	71.4	71.3	5.36	5.41	5.40	6.93	6.51	6.48	3	3.50
	23:07		Middle	3	20.50	20.50		8.40	8.40		29.33	29.33		71.4	71.5		5.41	5.42		6.34	6.12		4	
8/1/16	0:20	Cloudy	Middle	3	19.10	19.10	19.10	8.44	8.44	8.43	28.26	28.26	28.27	67.8	69.4	68.5	5.31	5.44	5.36	4.62	4.60	4.72	4	4.50
	0:21		Middle	3	19.10	19.10		8.41	8.41		28.27	28.27		68.9	67.7		5.39	5.30		4.69	4.96		5	
11/1/16	1:30	Cloudy	Middle	3	18.50	18.50	18.50	8.63	8.63	8.60	15.80	15.80	15.80	70.7	73.3	73.0	6.02	6.25	6.22	34.51	34.38	34.22	31	31.50
	1:31		Middle	3	18.50	18.50		8.57	8.57		15.79	15.79		74.3	73.5		6.33	6.27		34.05	33.95		32	
13/1/16	14:39	Fine	Middle	4	19.80	19.80	19.85	8.36	8.36	8.38	30.65	30.65	30.62	80.5	79.5	79.1	6.13	6.05	6.02	7.36	7.36	7.36	<2	2.00
	14:41		Middle	4	19.90	19.90		8.40	8.40		30.59	30.59		78.7	77.8		5.99	5.92		7.31	7.39		2	
15/1/16	17:24	Rainy	Middle	4	17.70	17.70	17.70	8.39	8.39	8.41	27.24	27.24	27.25	86.0	84.3	83.8	6.96	6.82	6.78	10.12	10.12	10.13	6	5.50
	17:26		Middle	4	17.70	17.70		8.43	8.43		27.25	27.25		83.2	81.7		6.73	6.61		10.13	10.13		5	
18/1/16	20:08	Cloudy	Middle	3	18.30	18.30	18.20	8.57	8.57	8.54	27.28	27.28	27.28	70.4	71.9	71.6	5.64	5.77	5.74	8.99	9.05	9.02	6	6.00
	20:09		Middle	3	18.10	18.10		8.53	8.50		27.28	27.28		72.2	71.8		5.79	5.76		9.02	9.01		6	
20/1/16	22:40	Cloudy	Middle	3	17.50	17.50	17.45	8.64	8.64	8.61	26.31	26.31	26.31	70.1	70.7	70.0	5.73	5.78	5.80	12.96	13.02	13.01	3	3.00
	22:41		Middle	3	17.40	17.40		8.57	8.57		26.30	26.30		70.0	69.3		5.72	5.97		13.05	13.00		3	
22/1/16	2:40	Cloudy	Middle	3	16.00	16.00	15.95	8.61	8.61	8.58	25.87	25.87	25.88	66.4	65.9	67.0	5.61	5.58	5.66	11.34	11.30	11.32	8	7.50
	2:41		Middle	3	15.90	15.90		8.54	8.54		25.88	25.88		67.7	67.9		5.72	5.74		11.39	11.24		7	
25/1/16	0:48	Fine	Middle	3	12.10	12.10	11.98	8.58	8.58	8.56	26.25	26.25	26.26	73.2	73.1	73.1	6.71	6.71	6.71	11.05	11.06	11.08	4	4.00
	0:49		Middle	3	11.70	12.00		8.53	8.53		26.27	26.27		72.9	73.1		6.69	6.71		11.08	11.13		4	
27/1/16	1:48	Cloudy	Middle	3	14.70	14.70	14.40	8.25	8.25	8.26	25.61	25.61	25.65	59.7	59.5	61.0	5.24	5.20	5.34	10.01	10.02	10.05	6	6.50
	1:49		Middle	3	14.10	14.10		8.27	8.27		25.68	25.68		62.4	62.2		5.46	5.46		10.07	10.09		7	
29/1/16	5:06	Cloudy	Middle	3	16.60	16.60	16.60	8.07	8.66	8.51	20.17	20.17	20.17	81.6	80.7	81.1	7.03	6.97	6.99	8.55	8.53	8.54	8	8.00
	5:07		Middle	3	16.60	16.60		8.65	8.65		20.16	20.16		81.1	81.0		6.98	6.99		8.51	8.57		8	



### Graphic Presentation of Water Quality Result of M5B - Central Cooling Water Intake Groups





### Graphic Presentation of Water Quality Result of Culvert J - Reference Station

